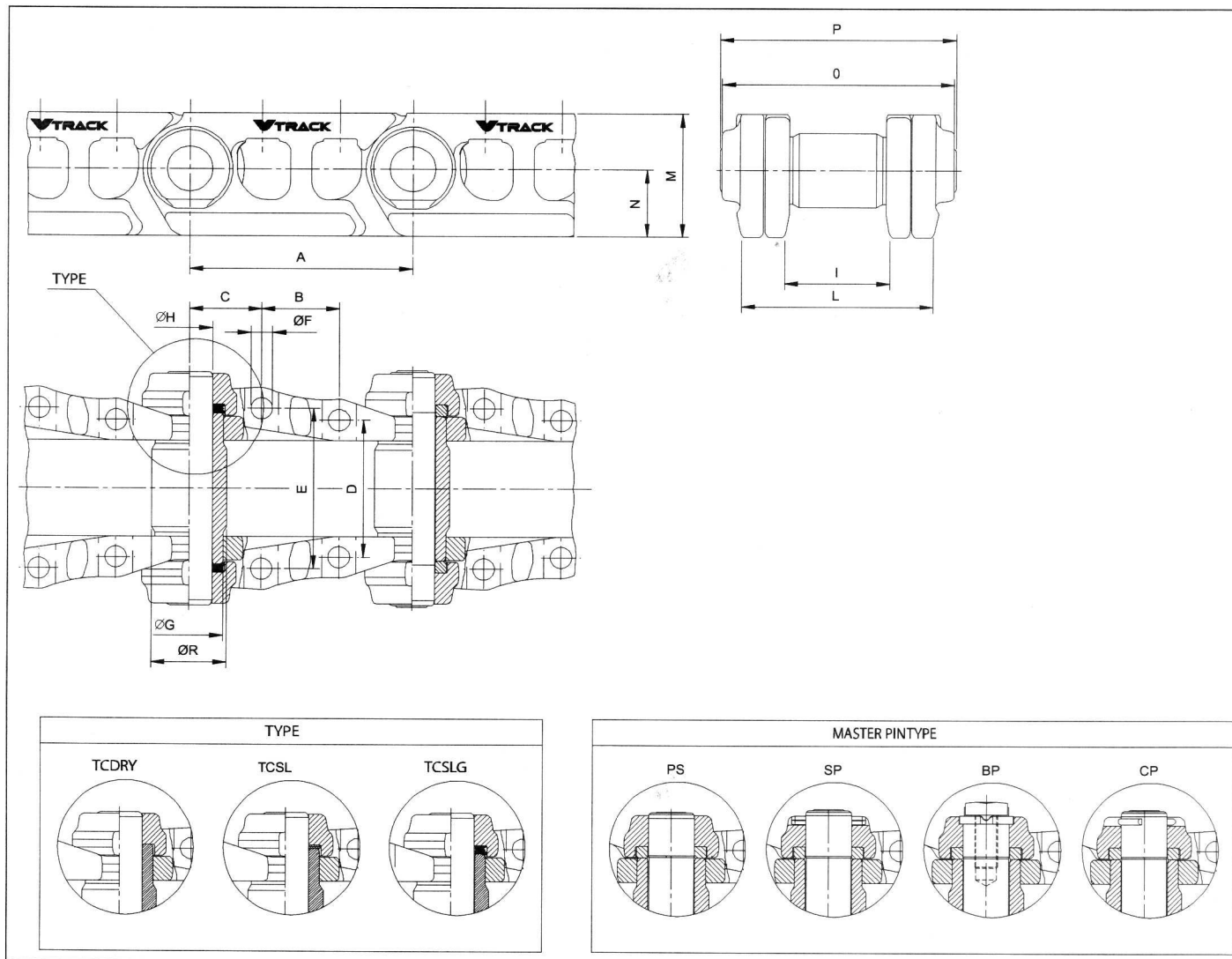


VE4030C645

TRACK CHAIN SEALED AND GREASED

PRODUCT FEATURES:

Weight: 712.5 Kg.



Type: TCSLG	A: 216	B: 76,2	C: 63
D: 140,4	E: 178,4	ØF: 22,5	ØR: 66,9
ØH: 44,8	I: 102	L: 197,6	M: 116
N: 64	O: 233,6	P: 242	ØG: 66,9
M.P.Type: CP			

Track shoe assy (45 links, 600mm, P=216) / Гусеница в сборе (45 звеньев, башмак 600мм, шаг 216)

207-32-03811 (BUK)

PC300

VE4030C645

TRACK CHAIN SEALED AND GREASED

COMPATIBLE WITH THE FOLLOWING VEHICLES:

HITACHI

EX300-5, ZX270, ZX270-3, ZX330, ZX330-1, ZX330-3, ZX330-5, ZX350-3, ZX350H-3, ZX350H-5, ZX350K, ZX350K-3, ZX350K-5

KOMATSU

BR550JG-1, BR580JG-1, PC290LC 7, PC290NLC 7, PC300 6, PC300 7 40001 -41268, PC300 7 41269-45000, PC300 7 45001-45490, PC300 7 45491UP, PC300 8 60001 UP, PC340 6, PC340-6K 30001-UP, PC350 6, PC350 7, PC350 8, PC360 7

CROSS REFERENCE (ORIGINAL CODES):

BERCO

KM2233/45, SI801/45

HITACHI

9156481, 9202851

ITM

E40306C0M00045, E40306C1M00045

KOMATSU

207-32-00141, 207-32-00300, 207-32-00321, 207-32-00380, 207-32-00390

VPI

VKM2233/45HDV

DISCLAIMER

The information contained in this product information sheet is current as at February 2025 and is based on data available to Valuepart Passini Holding as at the time of going to print. This publication replaces all previous Valuepart Passini Holding product information sheets relating to this code. Valuepart Passini Holding reserves the right to change the information contained in this document without prior notice. It is important that you get in touch with our sales dept to confirm that you have the most up to date information available. Valuepart Passini Holding has used its reasonable endeavours to ensure the accuracy and reliability of the information contained in this document and, to the extent permitted by law, will not be liable for any inaccuracies, omissions or errors in this information nor for any actions taken in reliance on this information.