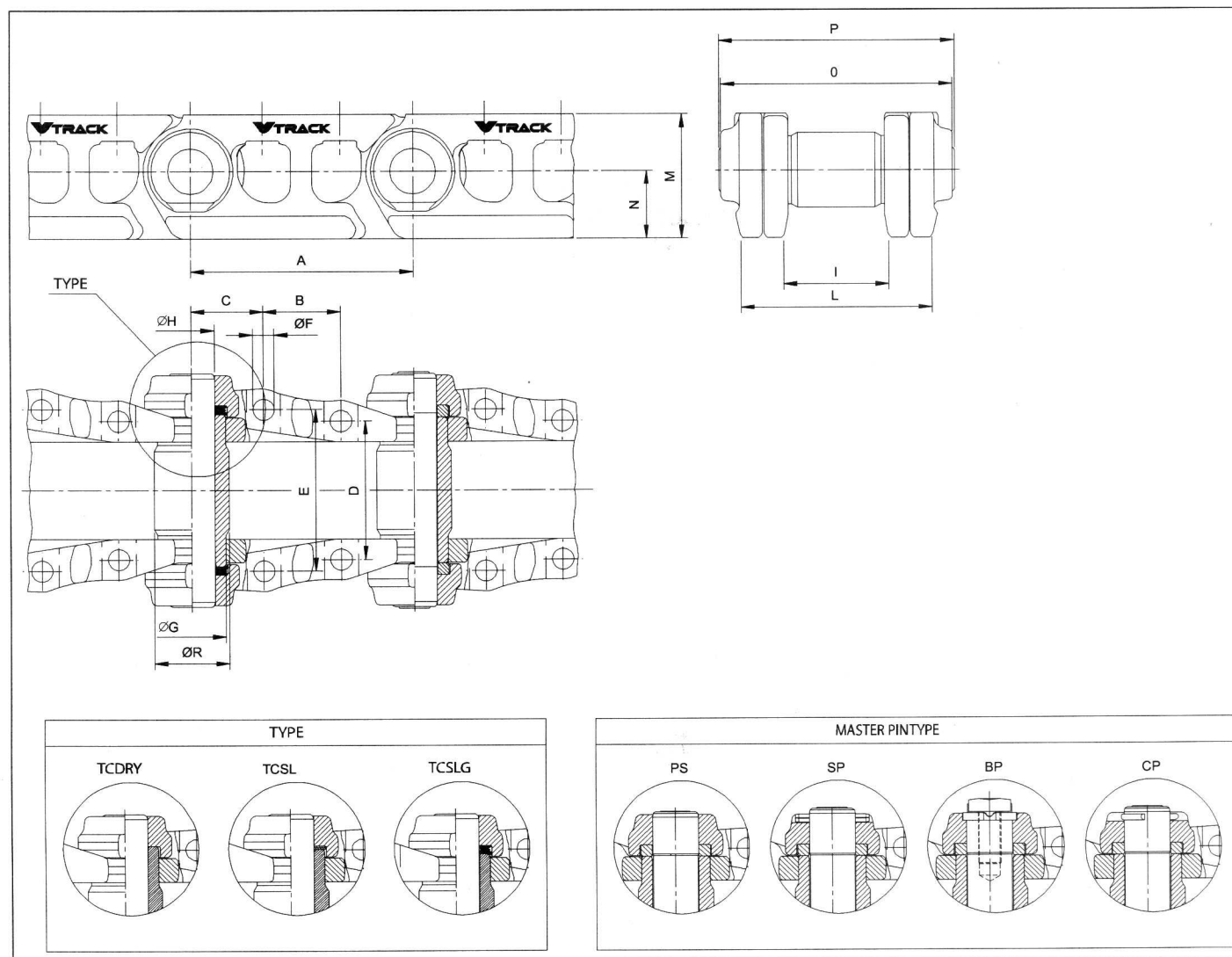


VE4040C049

TRACK CHAIN SEALED AND GREASED

PRODUCT FEATURES:

Weight: 942.36 Kg.



Type: TCSLG	A: 216	B: 76,2	C: 64
D: 146	E: 184	ØF: 24,5	ØR: 74,6
ØH: 47,15	I: 114	L: 202,3	M: 129
N: 70	O: 243	P: 254	ØG: 71,35
M.P.Type: CP			

Track shoe assy (49 links, 600mm, P=216) / Гусеница в сборе (49 звеньев, башмак 600мм, шаг 216)

9133226
(BUK)

ZX450

VE4040C049

TRACK CHAIN SEALED AND GREASED

COMPATIBLE WITH THE FOLLOWING VEHICLES:

HITACHI

EX400-2, EX400-5, EX400H-3, EX450-5, ZX370, ZX400LCH-3, ZX470H-3, ZX470H-5

KOMATSU

PC300HD 3, PC300HD 5, PC400 3 12244 UP, PC400 5 12244 UP

CROSS REFERENCE (ORIGINAL CODES):

BERCO

KM1402/49

ITM

E40400COM00049, E40407COM00049, E40407COY00049

KOMATSU

208-32-00101, 208-32-00160

VPI

VKM1402/49HDV

DISCLAIMER

The information contained in this product information sheet is current as at March 2025 and is based on data available to Valuepart Passini Holding as at the time of going to print. This publication replaces all previous Valuepart Passini Holding product information sheets relating to this code. Valuepart Passini Holding reserves the right to change the information contained in this document without prior notice. It is important that you get in touch with our sales dept to confirm that you have the most up to date information available. Valuepart Passini Holding has used its reasonable endeavours to ensure the accuracy and reliability of the information contained in this document and, to the extent permitted by law, will not be liable for any inaccuracies, omissions or errors in this information nor for any actions taken in reliance on this information.